

# AVAILABILITY

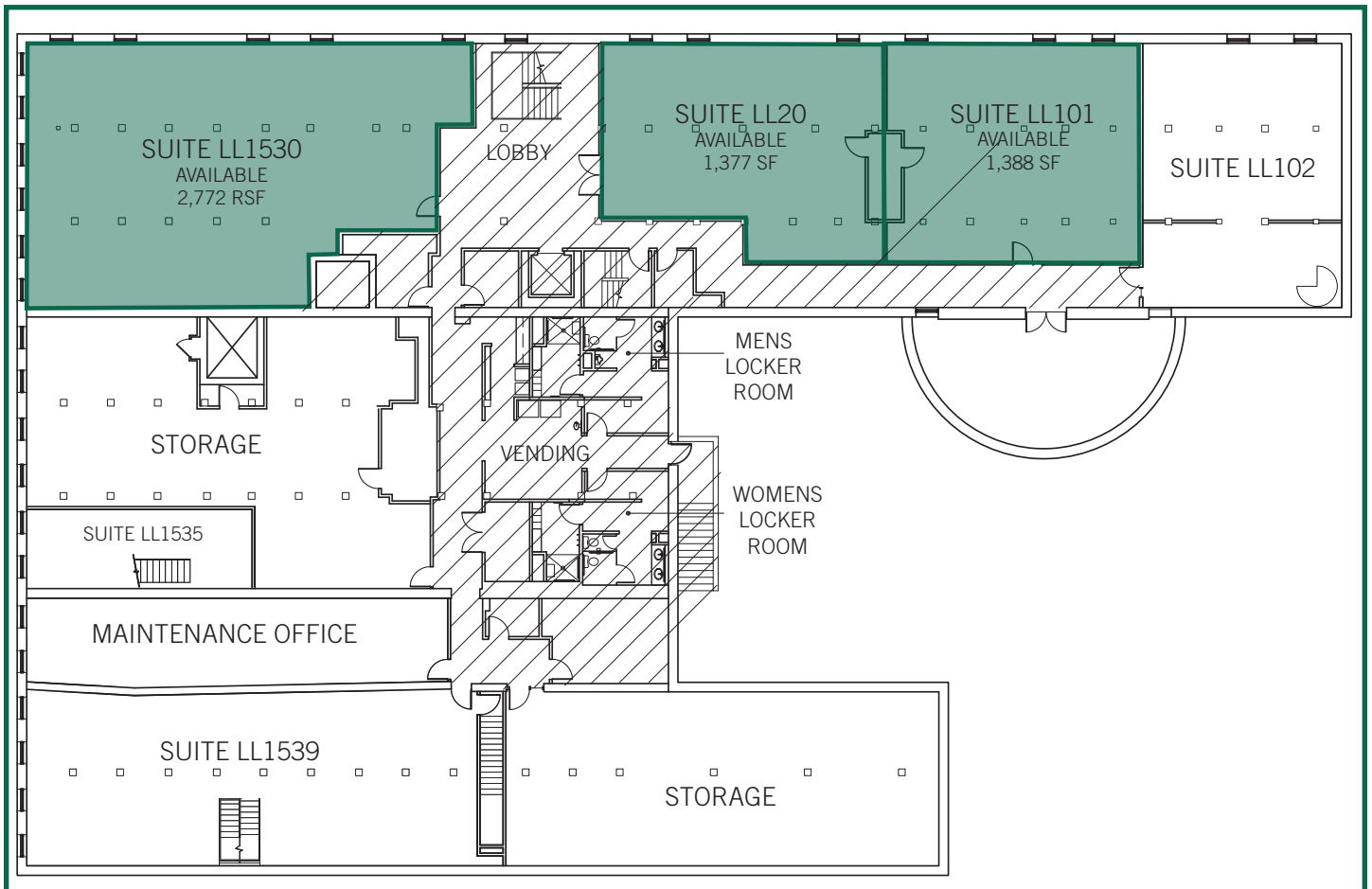
## BUILDING DETAILS

### Property Overview

Address	1900 Wazee Street, Denver, CO
Total GLA	61,672 sq. ft.
Average Floor Plate	19,170 sq. ft.
Year Built	1871
Year Renovated	2009
Stories	3
Parking	13 Surface Spaces
Walk Score®	92 (Walker's Paradise)
Transit Score®	92 (Rider's Paradise)

### Space Available

Suite:	Size:
Suite LL 101	1,388 RSF
Suite LL 1530	2,772 RSF
Suite LL 20	1,377 RSF
Suite 303	4,747 RSF
Suite 350/360	3,496 RSF



# AVAILABILITY

